

SUCCESS WITH LOUISIANA ENERGY CODE

Recommended Practices for Optimized Energy Savings
for Builders/Trades & Code Officials

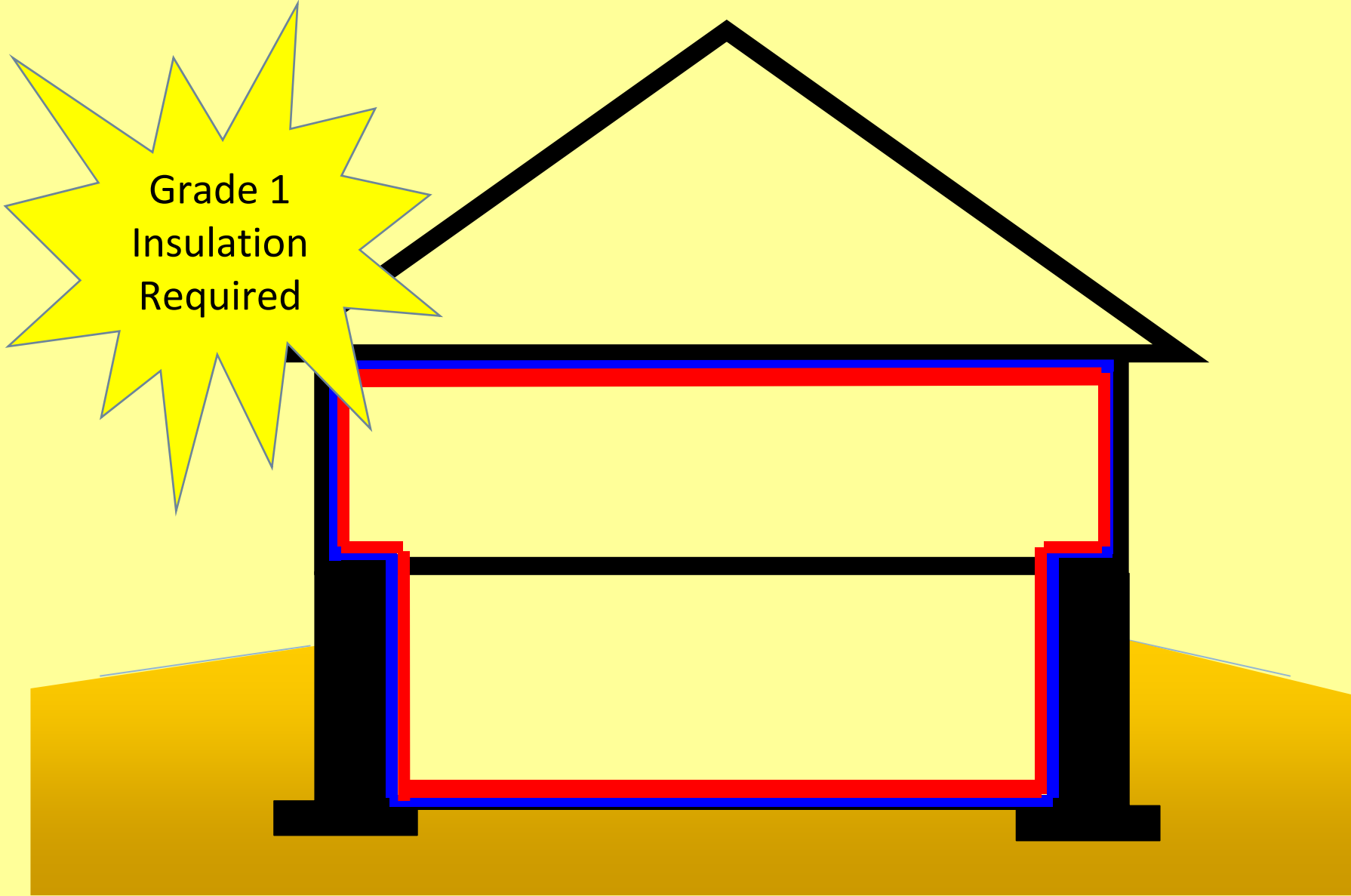


INSULATION

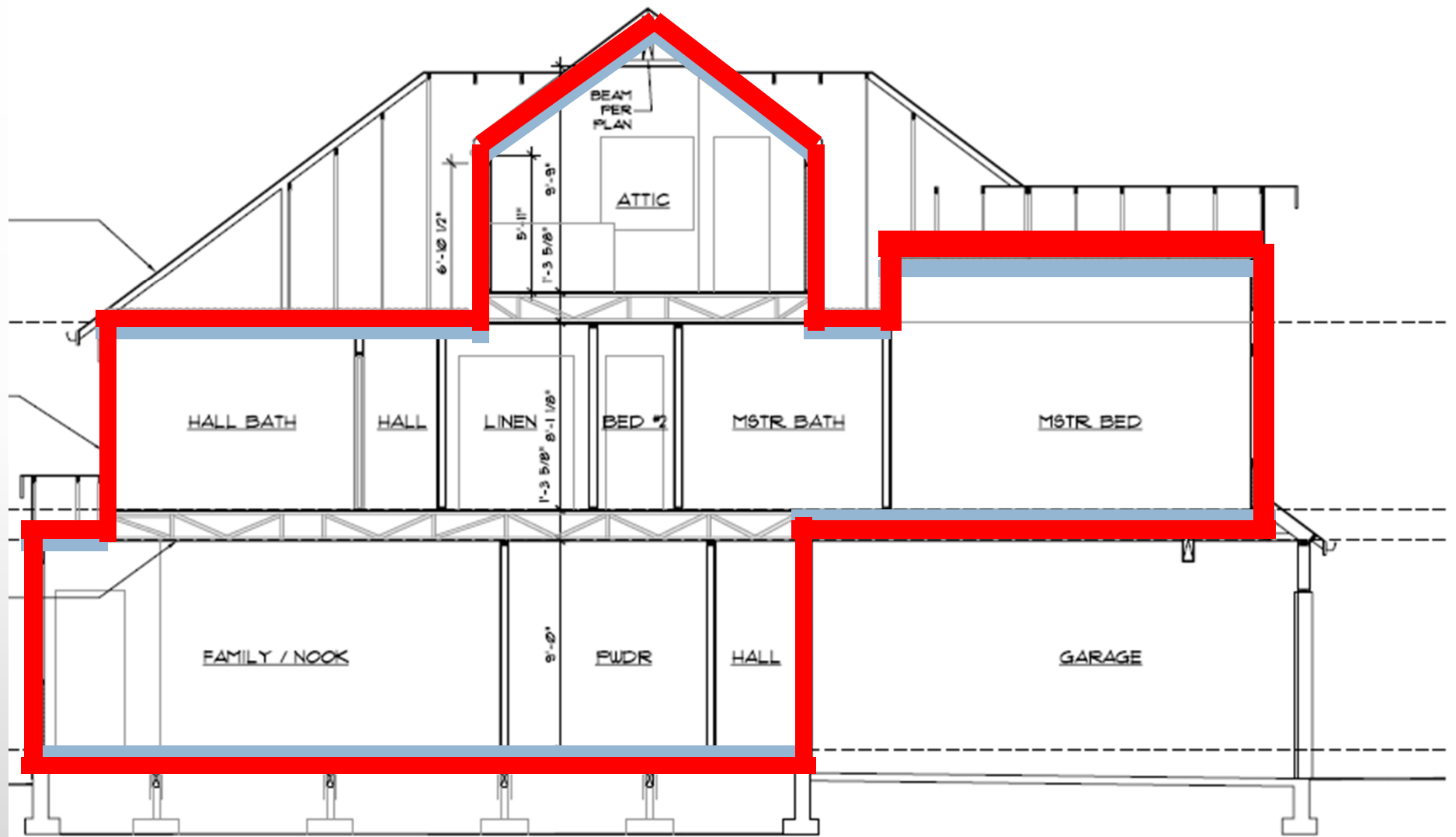
INSULATION

- Grade 1
- Completely fill the cavity
- In contact with the air barrier
- Avoid the fatal flaws!

Thermal Boundary Type and Location

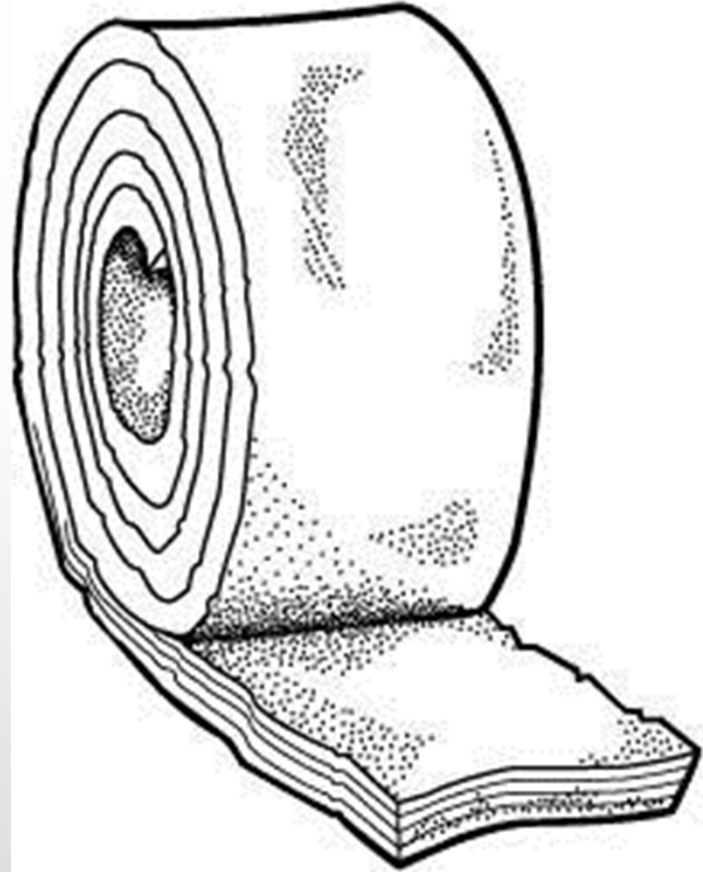


Grade 1
Insulation
Required



Installation Practices That Reduce R-value

- Gaps
- Voids
- Compression
- Misalignment
- Wind intrusion



What's the best type?



INSULATION

Installation

- **JC 1:** For vented attics, install wind baffles on top of all exterior walls, leaving room for insulation over top plates and ventilation above.
- **JC 2:** Install insulation to meet the Louisiana Energy Code R-value requirements.
- **JC 3:** For exterior foundation insulation, install without gaps, voids, misalignment or compression, and with a rigid, opaque and weather-resistant protective covering.
- **JC 4:** For exterior wall insulation, install without gaps, voids, misalignment or compression.
- **JC 5:** Install insulation to fill the cavity between conditioned and unconditioned space without gaps, voids, misalignments or compression.
- **JC 6:** Cut and split insulation around blocking, plumbing, HVAC and electrical components.
- **JC 7:** Install insulation to completely fill floor and/or cantilever framing or to maintain permanent contact with the subfloor.
- **JC 8:** Air seal around windows and doors using backer rod, caulk or low expansion foam.
- **JC 9:** Insulate the attic access to the same level as surroundings and install weather stripping around the perimeter.
- **JC 10:** For attics with loose fill insulation, install baffles around the attic access opening.



INSULATION

JC 1: For vented attics, install wind baffles on top of all exterior walls, leaving room for insulation over top plates and ventilation above.

- How
- Why
- What to avoid



How?

Specify locations

Install over top plate



INSULATION JC 1

Why?



INSULATION JC 1

Is it okay to see insulation?



INSULATION JC 1

INSULATION

JC 2: Install insulation to meet the Louisiana Energy Code R-value requirements.



PRODUCT

INSULATION

JC 3: For exterior foundation insulation, install without gaps, voids, misalignment or compression, and with a rigid, opaque and weather-resistant protective covering.



PRODUCT

INSULATION

JC 4: For exterior wall insulation, install without gaps, voids, misalignment or compression.



PRODUCT

INSULATION

JC 5: Install insulation to fill the cavity between conditioned and unconditioned space without gaps, voids, misalignments or compression.

- How
- Why
- What to avoid



PRODUCT

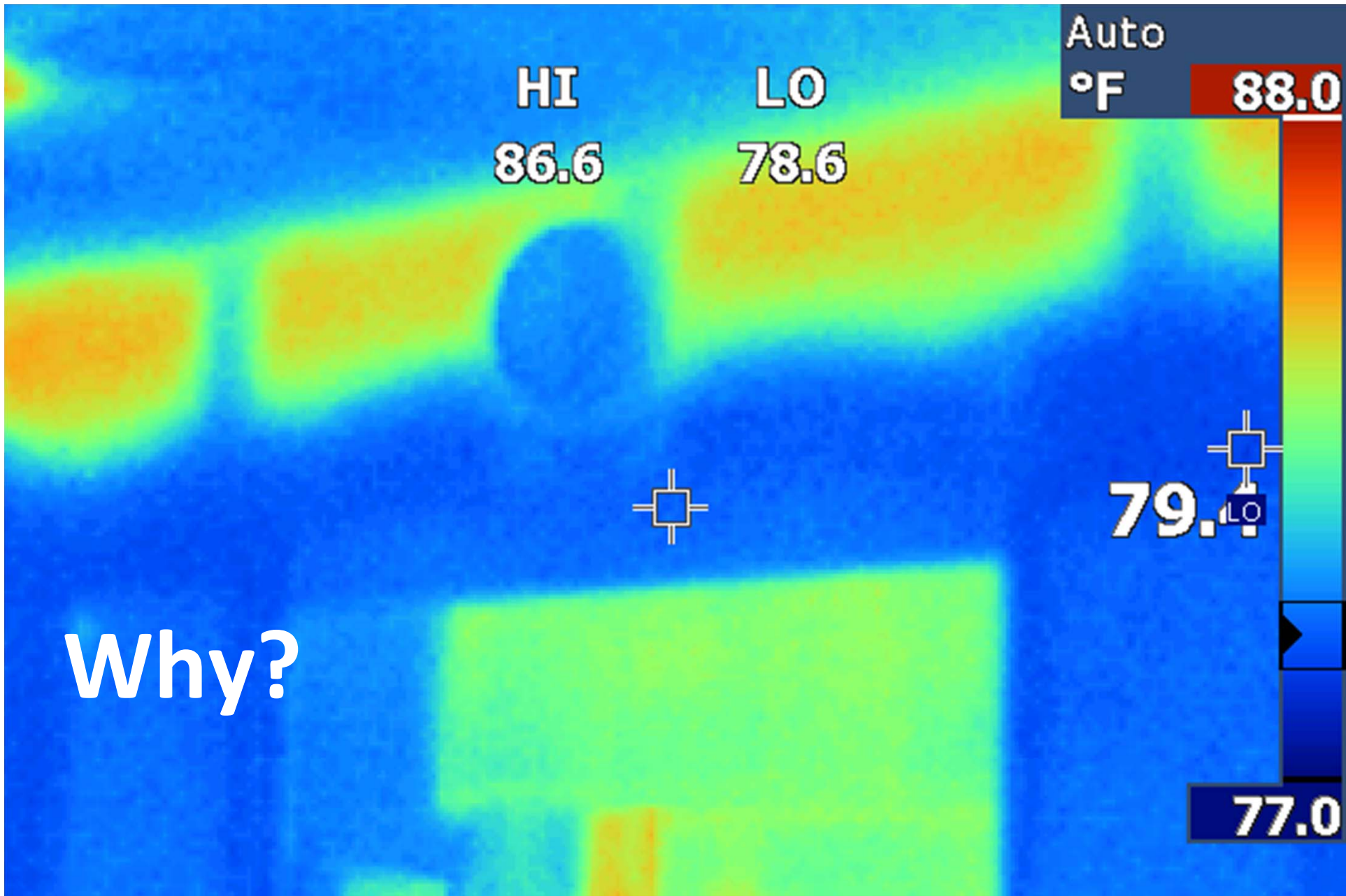
How?

Select insulation type

Specify Grade I install



INSULATION JC 3





GAPS: little adds up to BIG losses



INSULATION JC 3



VOIDS: Does everyone know what IC means?



INSULATION JC 3



MISALIGNMENT: insulation touching drywall?



INSULATION JC 3



**COMPRESSION: score that
insulation!**



INSULATION JC 3

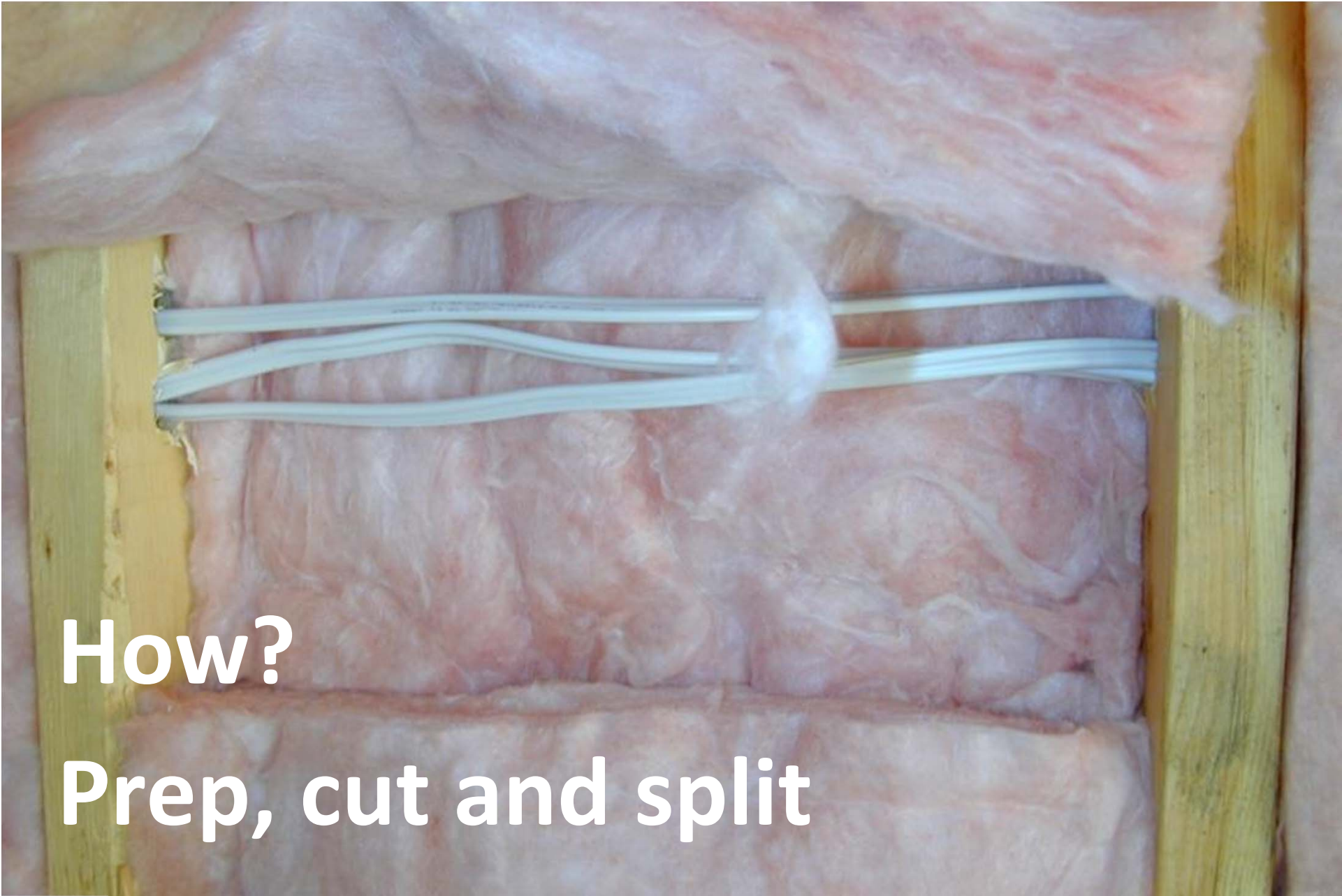


INSULATION

JC 6: Cut and split insulation around blocking, plumbing, HVAC and electrical components.

- How
- Why
- What to avoid





How?


Prep, cut and split



Why?



INSULATION JC 4



What can
make the
job easier?



INSULATION JC 4

INSULATION

JC 7: Install insulation to completely fill floor and/or cantilever framing or to maintain permanent contact with the subfloor.

- How
- Why
- What to avoid





**How?
Install to touch floor OR fill
cavity**



INSULATION JC 5

Why?



INSULATION JC 5

Where should the insulation be?



INSULATION JC 5

INSULATION

JC 8: Air seal around windows and doors using backer rod, caulk or low expansion foam.

- How
- Why
- What to avoid



PROCESS



PRODUCT

A close-up photograph of a wooden window frame. A dark, textured sealant strip is applied along the top edge of the frame. Above the sealant, a white caulk is applied to the joint between the frame and the surrounding wooden structure. The window opening shows a view of a wooden wall.

How?
Seal the gaps



INSULATION JC 6



Why?



INSULATION JC 6



NO INSULATION



INSULATION JC 6

INSULATION

JC 9: Insulate the attic access to the same level as surroundings and install weather stripping around the perimeter.

- How
- Why
- What to avoid



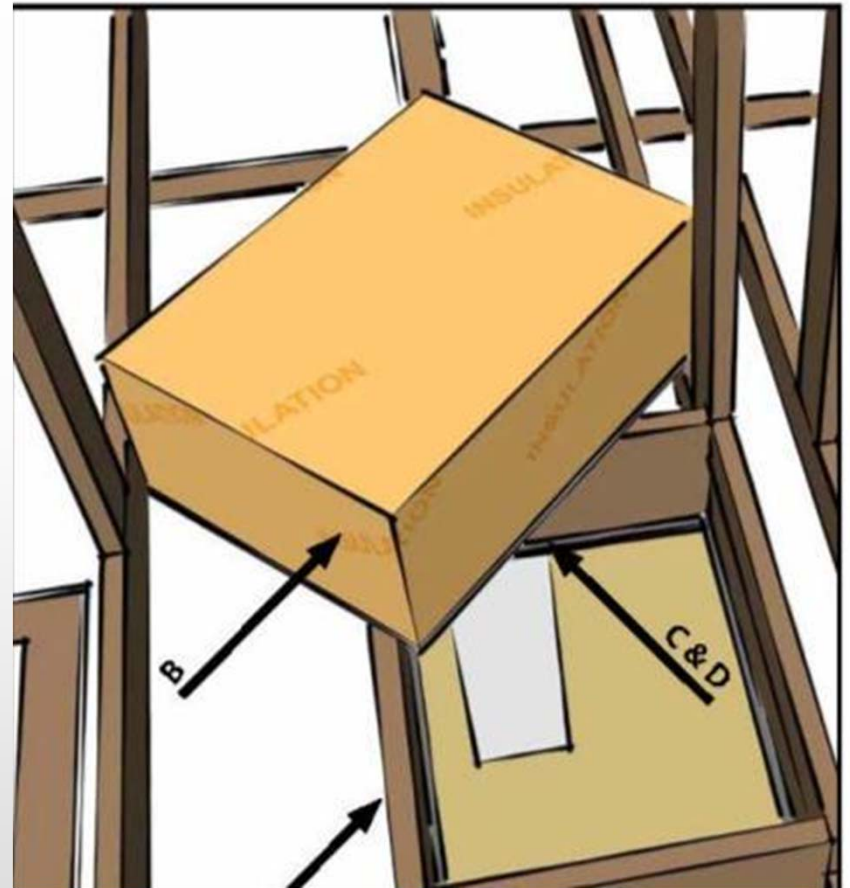
PROCESS




PRODUCT

How?

- Cut access doors to fit
- Install weather stripping
- Mechanically fasten insulation

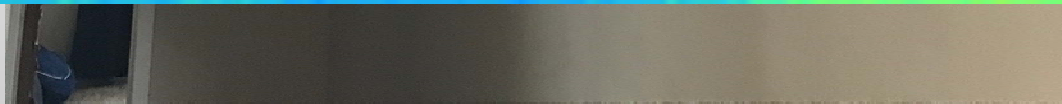
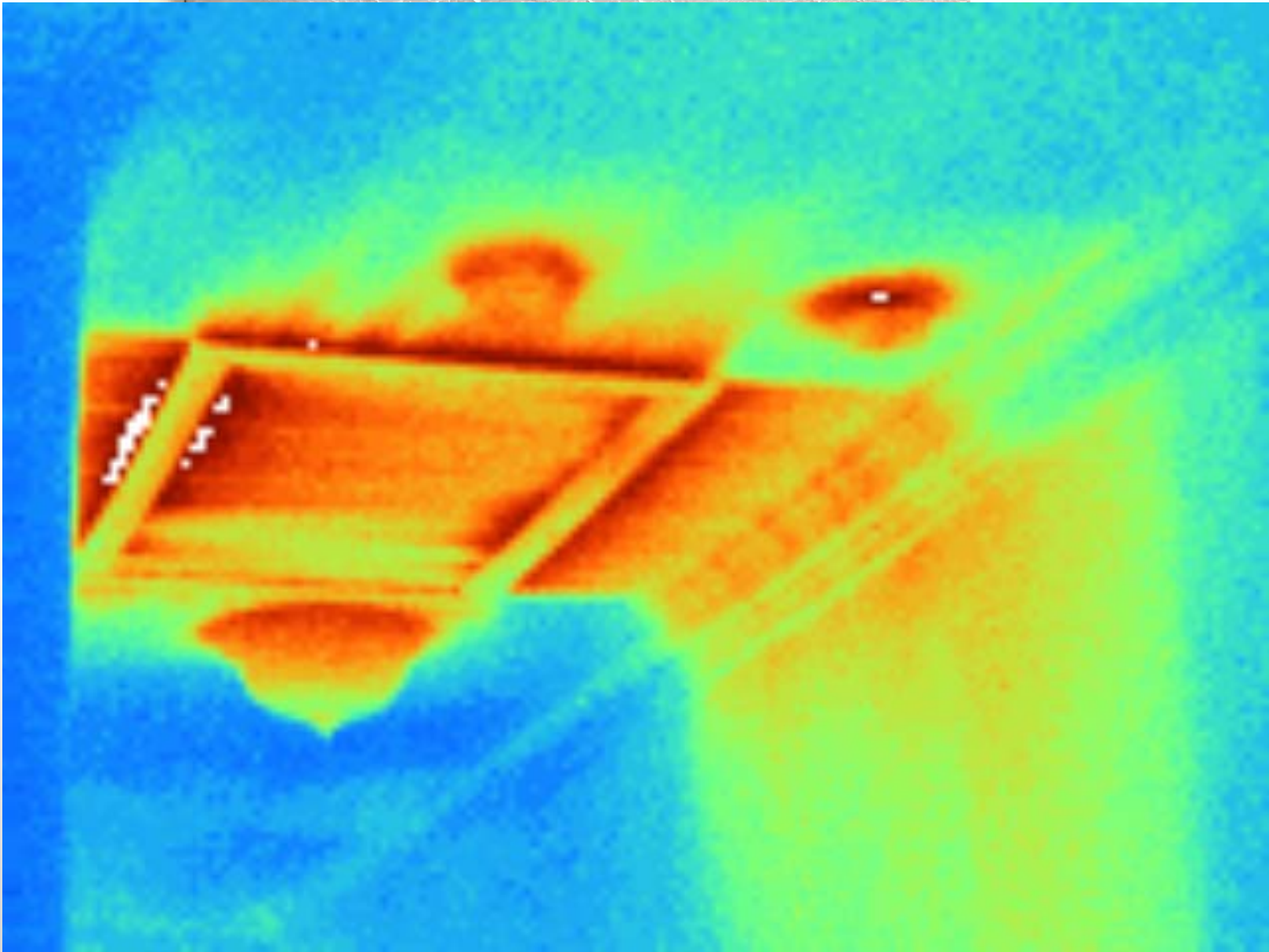




**Who's taking
care of this
spot?**



INSULATION JC 7





INSULATION

JC 10: For attics with loose fill insulation, install baffles around the attic access opening.

- How
- Why
- What to avoid





How?

Install blocking/baffles



INSULATION JC 8

Why?



INSULATION JC 8

CORNING® ATTIC STAIRWAY INSULATOR

- Save on energy costs year round.*
- No assembly required.
- Simply unfold and place over attic opening.



INSULATES ATTIC OPENINGS UP TO
25 1/2 in. x 54 in.
AISLA ABERTURAS DE ÁTICOS DE HASTA
25 1/2 pulg. x 54 pulg.



Áticos AISLANTE PARA ESCALERAS DE ÁTICOS

- Reduzca los gastos de energía durante todo el año.*
- No requiere montaje.
- Simplemente extienda y coloque sobre la abertura del ático

R-10

Width ancho	36 in. pulg.	Thickness grosor	3 in. pulg.	Piece pieza	1
Length longitud	60 in. pulg.	Coverage cobertura	25 1/2 in. x 54 in. pulg. x pulg.		
Height altura	19 in. pulg.	FOIL FACED CON REVESTIMIENTO METÁLICO			



PATENT PENDING.
PATENTE EN TRAMITE

25-1/2"X54" ATTIC STAIR
INSUL
\$53⁹⁵
0000-554-355